



FreezeJet

Liquid CO₂ Jet



User Manual

Version 1.1 June 2014

Le Maitre FreezeJet



Additional requirements for using the FreezeJet are:

- 120V AC current (10 watts)
- Switch or switching system for the current
- CO2 tank (siphon bottle type or Dewar tank) including a high-pressure bottle end – the bottle end **MUST** include a high-pressure washer
 - If using a Dewar tank: set to minimum 300 psi

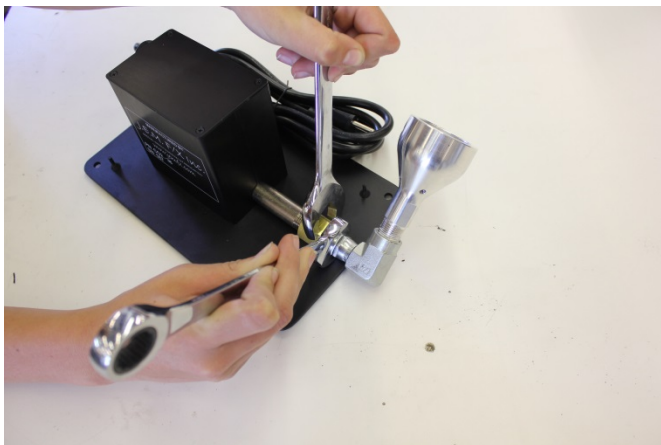
Safety Notes:

- Follow all proper safety precautions for working with CO2 tanks.
- Set the FreezeJet up only in safe surroundings, including space for a CO2 blast of up to 30 feet into the air.
- Ear and eye protection may be required.

Note: The CO2 blast may be smaller than 30 feet if used in hot or dry weather.

Instructions For Use

- 1) Remove the FreezeJet from the box.
- 2) Secure the FreezeJet to the ground so it cannot move.
- 3) If needed, turn the FreezeJet nozzle to a different angle, using two wrenches: one wrench to loosen and then re-tighten the nozzle against the fitting, the other to keep the fitting braced. The nozzle should be tightened snugly but not stripped.



- 4) With your switching system in the Off position, plug the FreezeJet into the switch and 120V AC current.
- 5) Test: click the switch on and off several times. You should hear a clicking sound from inside the FreezeJet housing.

Using the Le Maitre FreezeJet - Instructions for Use

- 6) Attach the CO2 hose to the high-pressure bottle via the CGA 320 swivel nut. Tighten the hose onto the CO2 tank's high-pressure fitting very firmly (just short of stripping). Making sure the hose is not kinked.



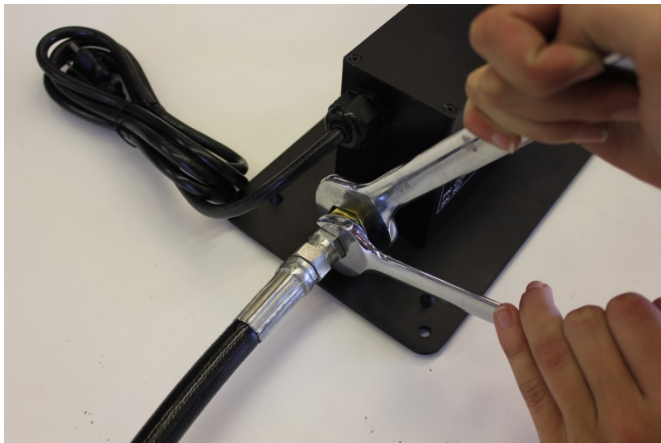
Using the Le Maitre FreezeJet - Instructions for Use



- 7) Connect the CO2 hose to the FreezeJet's -6 JIC fitting snugly, using two wrenches: one wrench turning, the other bracing the fitting. (No Loc-tite or other sealant is needed; this is a JIC fitting.)



Using the Le Maitre FreezeJet - Instructions for Use



Once the CO2 is connected to the FreezeJet: never place eyes or ears over the Cryo-Head nozzle.

- 8) Slowly open the CO2 tank's valve all the way.



- 9) Look and listen for ANY LEAKS or other obvious problems in the tank, hose, and FreezeJet. The FreezeJet is now ready for use. Check to make sure there no kinks in the hose.

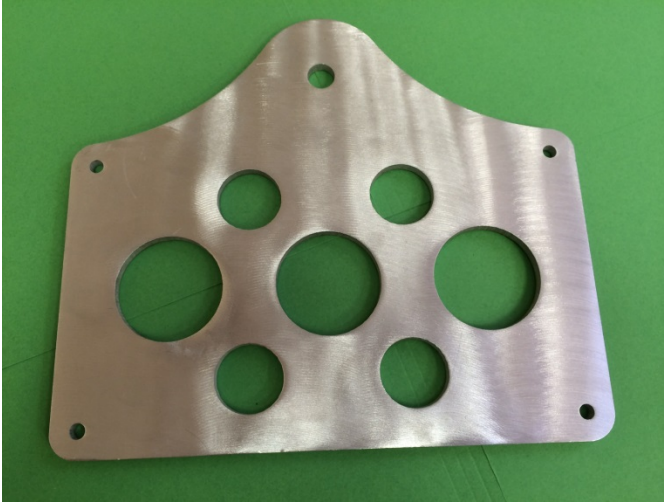
Before triggering the FreezeJet: always give people an audible warning, or use it under controlled circumstances, to avoid the safety risks of startling everyone nearby.

- 10) To use: Turn the switch ON.

Note: be careful if leaving the switch ON for more than 15 seconds. This may cause ice buildup in the nozzle, and this can cause a short burst of CO2 to release when the FreezeJet thaws, at some time after it is switched OFF.



Options



Mounting Plate

After Using the FreezeJet

After use, allow adequate time for the FreezeJet nozzle to warm up before handling, especially with unprotected hands.

Safety test: switch the FreezeJet ON, then OFF again. Within 8-10 seconds after switching it OFF, place a hand over the nozzle and feel for any leaking CO2.

To disconnect the FreezeJet, follow these steps ***in order***:

- 1) Completely close the CO2 tank's valve.
- 2) Turn the FreezeJet switch ON, until the hose and FreezeJet are purged of CO2.
- 3) Turn the switch OFF.
- 4) Unplug the FreezeJet's power.
- 5) Disconnect the CO2 hose from the FreezeJet.

Contact Details

Le Maitre USA, LLC

13975 Grand Valley Parkway

Las Vegas, NV 89165

USA

Tel: +1 (702) 843-5080

Fax: +1 (702) 843 5070

Email: info@lemaitreusa.com

Website: www.lemaitreusa.com

Warranty

The Le Maitre FreezeJet is sold with a lifetime warranty, which includes parts and labor from the date of purchase. This warranty covers manufacturing defects, providing that the unit has been regularly serviced by an authorized agent and has only been used with the correct accessories.

Le Maitre USA considers all of its products to be safe for use in the application it was intended. Le Maitre USA takes no responsibility for misuse or incorrect use. Always refer to the equipment owner's manual for proper use, and be aware of local legislation governing the products use.

Le Maitre USA LLC
13975 Grand Valley Parkway
Las Vegas, NV 89165
USA

Le Maitre is a registered trademark of Le Maitre Ltd